

2021 Annual Report



INTRODUCTION

Southern Minnesota Regional Legal Services provides free, high-quality legal help to low-income people in critical civil matters. For 113 years, we've helped individuals and families secure and protect their basic needs, maintaining freedom from hunger, homelessness, sickness, and abuse. Because, justice matters.

MISSION STATEMENT

To provide a full range of high quality legal services to low-income persons and eligible client groups in civil matters, in a respectful manner which enables clients to (1) enforce their legal rights; (2) obtain effective access to the courts, administrative agencies and forums which constitute our system of justice; (3) maintain freedom from hunger, homelessness, sickness and abuse; (4) empower persons and assure equal opportunity, thus, helping people to help themselves and become economically self-reliant, to the extent their individual abilities and circumstances permit.

SMRLS, through a diverse, respectful and fair working environment, and legal assistance and community education activities, promotes and respects the dignity of low-income persons and seeks new and effective solutions to the critical and common legal problems of low-income persons which arise in a broad community context.

How to Help

Direct Donation

Your donation - of any amount - will be counted to our Annual Campaign. These funds will be used to support direct client services, providing critical legal assistance to those who otherwise would not be able to afford it. Visit smrls.org/donate to learn more.

Volunteer

In Minnesota, there are over 2900 eligible clients for every paid legal aid attorney. If you are an attorney looking to make a difference, please consider donating your time and expertise to SMRLS and our client community. Visit smrls.org/volunteer to learn more.

Planned Giving

To ensure that SMRLS can continue to serve our community in the coming decades, please consider making a planned gift, either as part of your estate or to commemorate a cornerstone event; a birth, a graduation, a retirement, or other joyous occasion. Reach out to cla@smrls.org to get more information.

SMRLS PROGRAMS

SMRLS provides a full range of legal services, including extended representation, limited representation, brief services and advice. Access to those services is provided throughout the service area via local offices, local clinics, and staff embedded in partner's offices across the service area. SMRLS's Agricultural Worker Program provides a full range of services to eligible farm workers across the entire states of Minnesota and North Dakota.

We use a number of methods to deliver services to eligible clients across its service area, including specialized law units that focus on individual cases and impact litigation, hotline attorneys who offer clients advice, and occasional brief service, and pro bono attorneys who offer assistance at pro se divorce clinics, wills clinics, and housing clinics. In addition, SMRLS imbeds staff attorneys at healthcare clinics across the service area to extend our reach to clients who otherwise may not be aware of its services.

Our **Housing** unit protects clients from a loss of affordable housing. Priority cases include:

- Issues with landlords including serious repair problems, illegal changing of locks, and illegal retaliation against a tenant for enforcing their rights.
- Eviction issues, including evictions from manufactured homes, evictions where children reside in the household, families receiving rental assistance subsidies, and special needs tenants.
- Loss of rental assistance subsidies.
- Illegal housing discrimination.



Our **Family Law** attorneys preserve stability for children, protects victims of abuse, and secures financial stability for families. Priority cases include:

- Cases involving victims of domestic abuse, sexual assault, dating violence, or stalking, including Orders for Protection, and Harassment Restraining Orders.
- Assistance for primary caretakers including responding to divorce or custody petitions where the non-caretaker is seeking custody, and custody modification and restricted parenting time when the child is in danger.
- Situations involving a friend of family member seeking custody when the child will otherwise be placed in foster care.
- Indian Child Welfare Act cases.



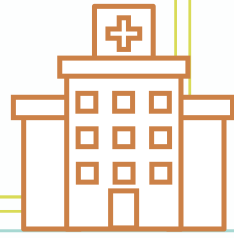
Our **Economic Justice** program maximizes financial outcomes for clients to meet their basic needs. Priority cases include:

- Emergency assistance with utility shut off, unpaid rent, and eviction.
- Minnesota Family Investment Program (MFIP) and Diversionary Work Program (DWP).
- Supplemental Security Income (SSI) or Social Security Disability Insurance (SSDI) denial or termination.
- Unemployment Insurance.
- Garnishments from paychecks or bank accounts.



Our **Healthcare-Legal Partnerships** prioritize cases that address the social determinants of health for low-income patients at several clinic locations in Minnesota. SMRLS currently has partnerships with the following clinics:

- Bethesda Clinic, St. Paul
- Children's Hospital and Clinics, St. Paul
- Open Door Health Center, Mankato
- Proof Alliance, St. Paul
- Wilder Community Mental Health and Wellness Clinic, St. Paul



Agricultural Worker Project

Agricultural Workers Project helps with employment-related legal issues to improve the working and living conditions for agricultural workers in Minnesota and North Dakota. Priority cases include:

- Wage theft.
- Workplace health and safety violations.
- Employer-provided housing concerns.
- Employment discrimination and retaliation.
- H-2A contract violations.
- Labor trafficking.

Our **Legal Advocacy for Older People** project represents people 60 years or older with a focus on those with the greatest social and economic need. Priority cases include:

- Benefits including Food Stamps (SNAP), Medical Assistance (MA), and Social Security Disability.
- Evictions, subsidized housing, and reasonable accommodations for people with disabilities.
- Elder Abuse.
- Nursing Home payment, conditions, and discharge.



Our **Education Law** project enforces children's rights to receive a fair and appropriate education from early childhood through high school. Priority cases include:

- School expulsions and suspensions.
- Special education services for students with disabilities.
- Education of English language learners.
- Racial discrimination and bias in schools.
- Bullying and harassment in schools.

Our **Immigration** unit reunites clients with their families and helps them become increasingly self-sufficient. Priority cases include:

- Applications for permanent residence.
- Naturalization and citizenship applications.
- Applications for victims of domestic violence and violent crimes.
- Replacement of lost, stolen, or expiring documents.



A Note from CEO Jessie Nicholson:



We have been living with the pandemic and its effects for over two years now. In our last annual report, I told you about how legal services were impacted by the COVID 19 pandemic. *Year two of the pandemic brought an additional increase in need for legal services.* Last year, we served over 22,500 Minnesotans with quality legal advice and advocacy. We closed 842 more cases in 2021 than in 2020. Both the number of clients, and the complexity of their legal problems, continue to increase. This is our new normal.

Our team at SMRLS have added new staff members. The Education Law Advocacy Project (ELAP) at SMRLS' Midway office learned early in the pandemic that kids from poor families, families of color, and English language learners were going to be at particular risk of falling behind during remote learning. ELAP responded and grew their team to include a social media specialist to enhance outreach and communication efforts. As the eviction "moratorium" ended, SMRLS' housing staff were confronted with rising numbers of evictions. Our Housing Unit added another housing clinic to triage evictions.

We find ourselves, like many others, finding creative new ways to do the same core work of our mission - protecting families from hunger, homelessness, sickness, and abuse. For example, we rely on virtual court rooms in each of our offices so that we can go to court "in person", with our clients, in the same room. Our teams have pivoted to offer virtual presentations for many community legal education programs. We found ourselves needing to reenvision how legal aid clinics can operate. Our **Justice Bus** hit the road to reach clients in isolated communities. The Agricultural Workers' Project, which relies on getting out to communities to meet agricultural workers where they live and work, worked with public health crews to reach prospective clients at vaccination clinics so they could meet clients where they live and work.

Our dedicated staff and volunteers continue to do more than ever before for those folks most at risk. Legal aid continues to be a frontline service, required for many low-income Minnesotans to keep food on the table and a roof over their heads. We still work each day to keep survivors free from their abusers, to make services and therapies accessible to children, and to make benefits accessible to those who need them.

Here at SMRLS, we are meeting the increased demand head-on, thanks to the support of our community partners, donors, volunteers, and staff. We could not continually pivot, recreate, and grow without the support of each and every one of you. I humbly thank you for your support in 2021 and beyond.

Thoughtfully and Thankfully,

Jessie E. Nicholson

2021 Events

Fall Appreciation Luncheon

We held our annual Fall Appreciation Luncheon on November 23rd, 2021 at the InterContinental Riverfront Hotel in downtown St. Paul. The event was a great success! We welcomed 170 in-person attendees, as well as 42 virtual attendees. Our keynote speaker for the event was The Honorable Richard Gergel; he delivered an educating address discussing the intersection of race and the justice system.



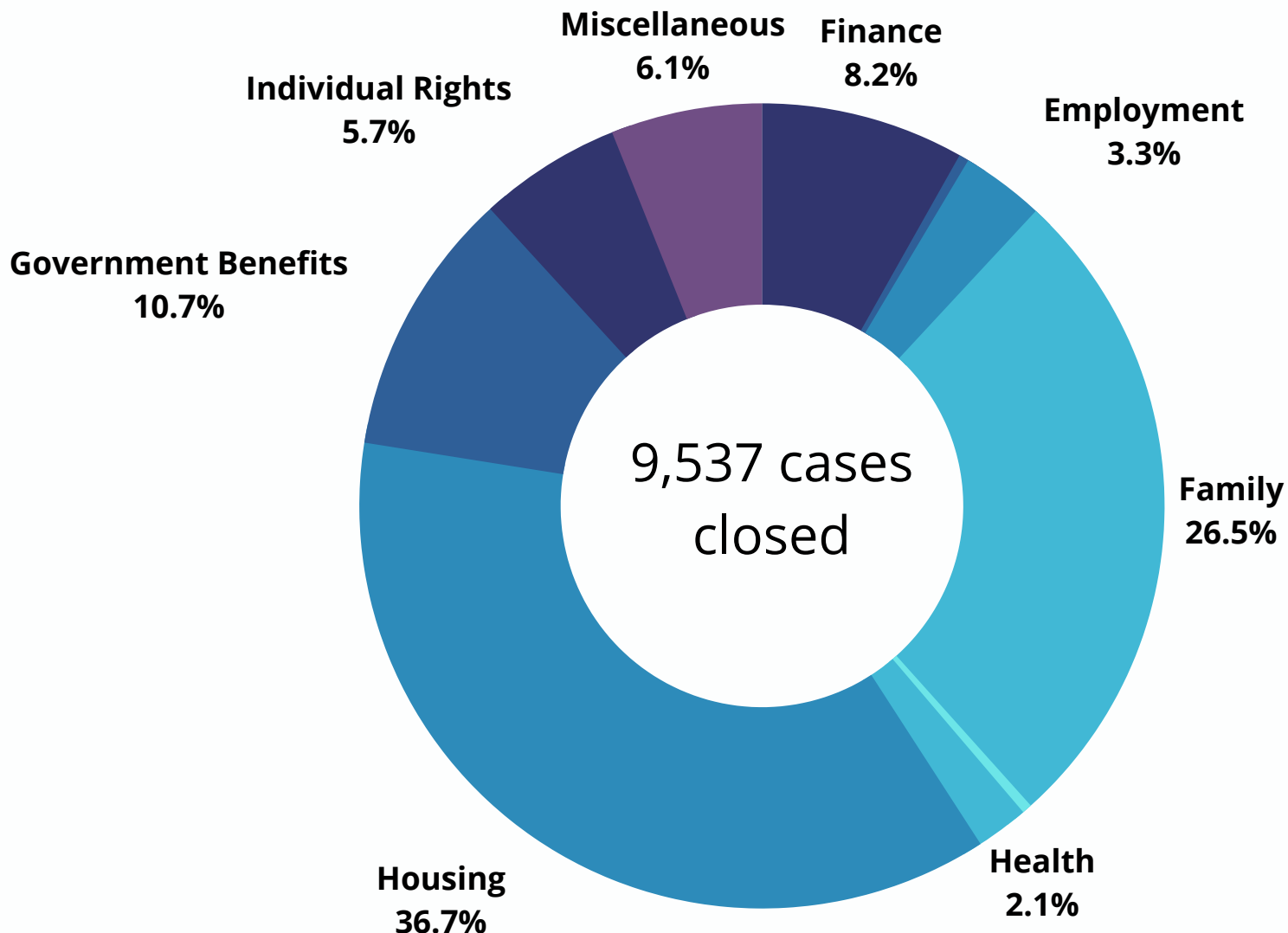
Social Justice Uncorked

The 14th Social Justice Uncorked took place on December 16th, 2021 at The Depot in downtown Minneapolis. The hybrid event format allowed for 120 in-person attendees, and 43 virtual attendees. We were grateful to have had Don Lewis as the guest host at this year's gala. The total raised at this event was \$164,604.24!



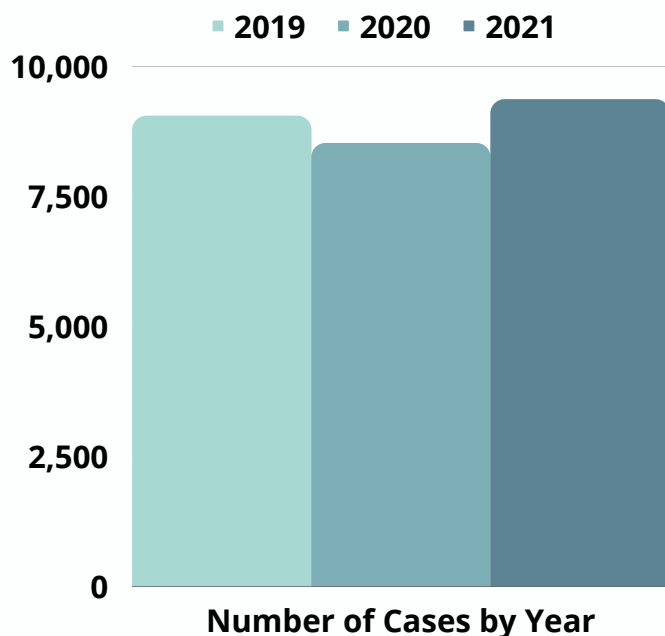
A Year in Review

24,423 people in households served



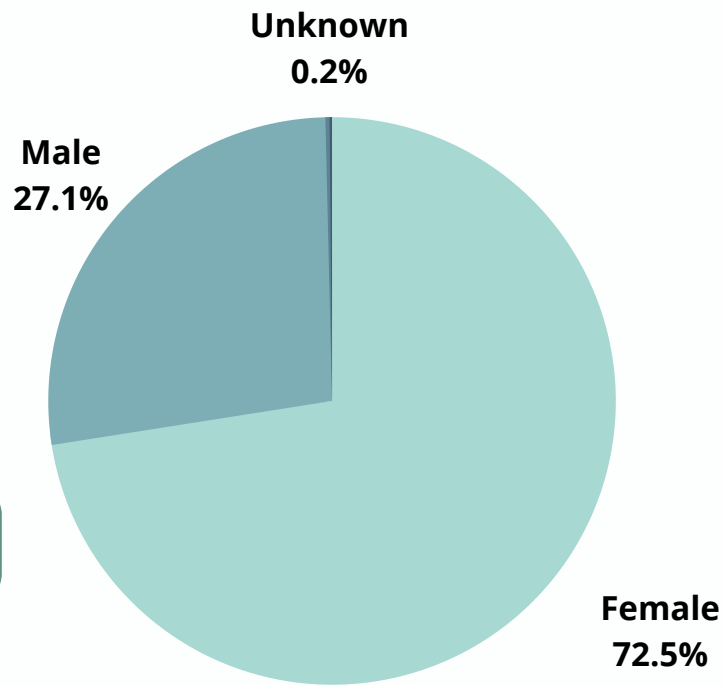
Increasing need...

In 2020, we saw a significant drop in the number of cases closed; this was due to the unprecedented global pandemic and learning to navigate legal aid virtually. Even though we remain in a pandemic, SMRLS has found creative ways to effectively deliver services. **As a result, we closed more cases in 2021 than 2020 and 2019.**

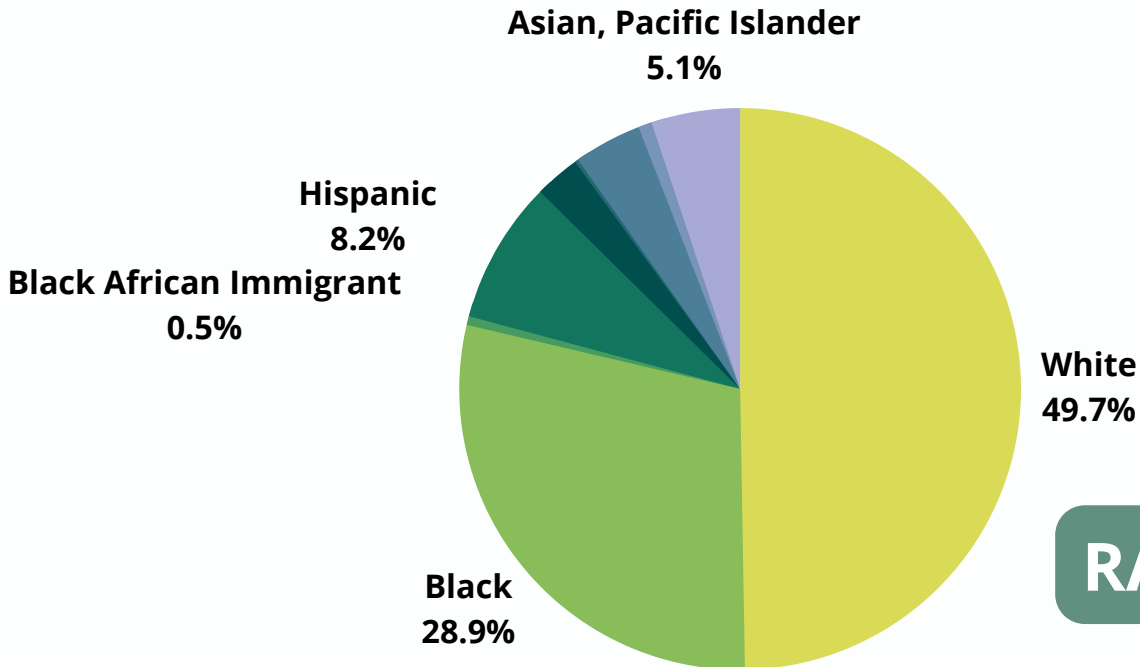


Client Demographics

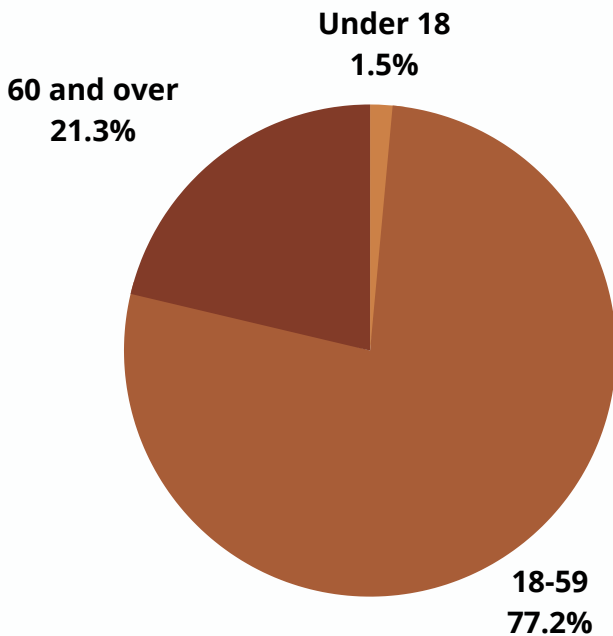
GENDER



RACE

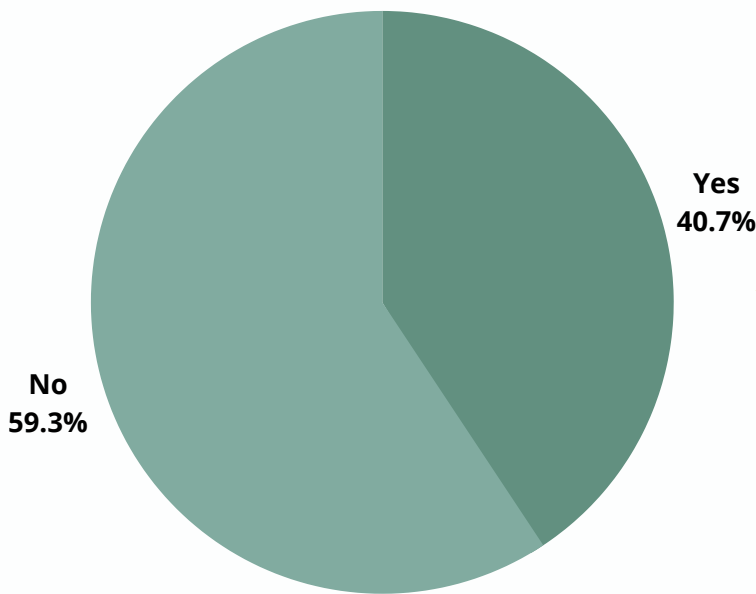


AGE

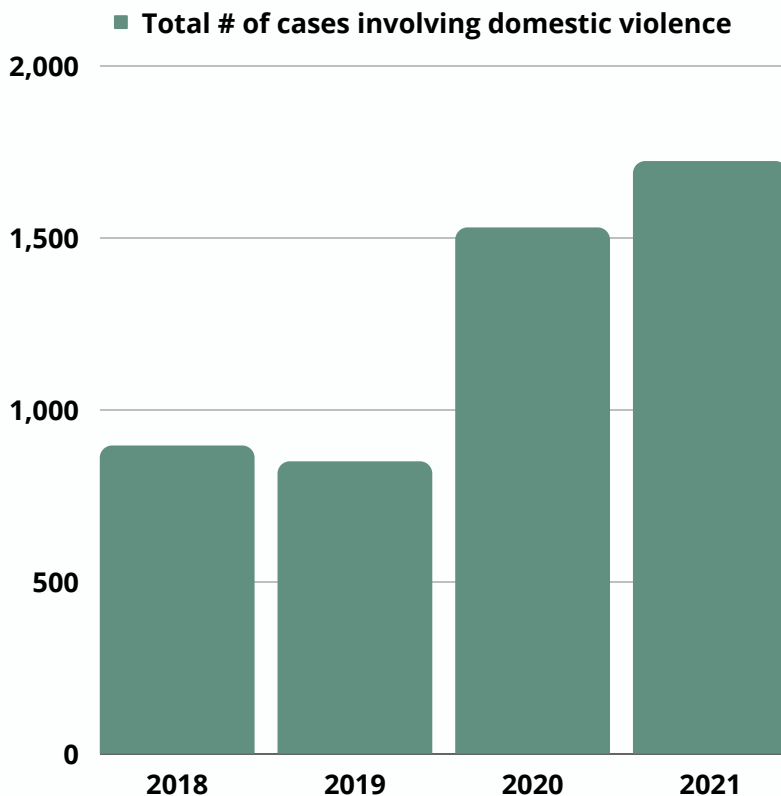


Clients served spoke **over 20** languages.

English - 8327	Burmese - 9
Spanish - 223	Cambodian - 9
Karen - 145	French - 3
Somali - 140	Russian - 1
Hmong - 62	Albanian - 1
Oromo - 18	Other African languages - 8
Amharic - 13	Other Asian languages - 7
Arabic - 13	Other - 22
Vietnamese - 11	Unknown - 330
American Sign Language - 10	



Did the client represented have a **physical or mental disability?**



A note about the increase in domestic violence...

A number of studies have found that intimate partner violence has significantly increased during the COVID19 pandemic. We have seen this disturbing increase within our client community as well; from 2019 to 2020, the total number of cases involving domestic violence increased by **80%**. From 2020 to 2021, it increased by an additional **12%**; the number of cases involving domestic violence **doubled** in just two years, from 2019 to 2021.

Volunteer Attorney Program

Number of cases closed by volunteer attorneys: 39

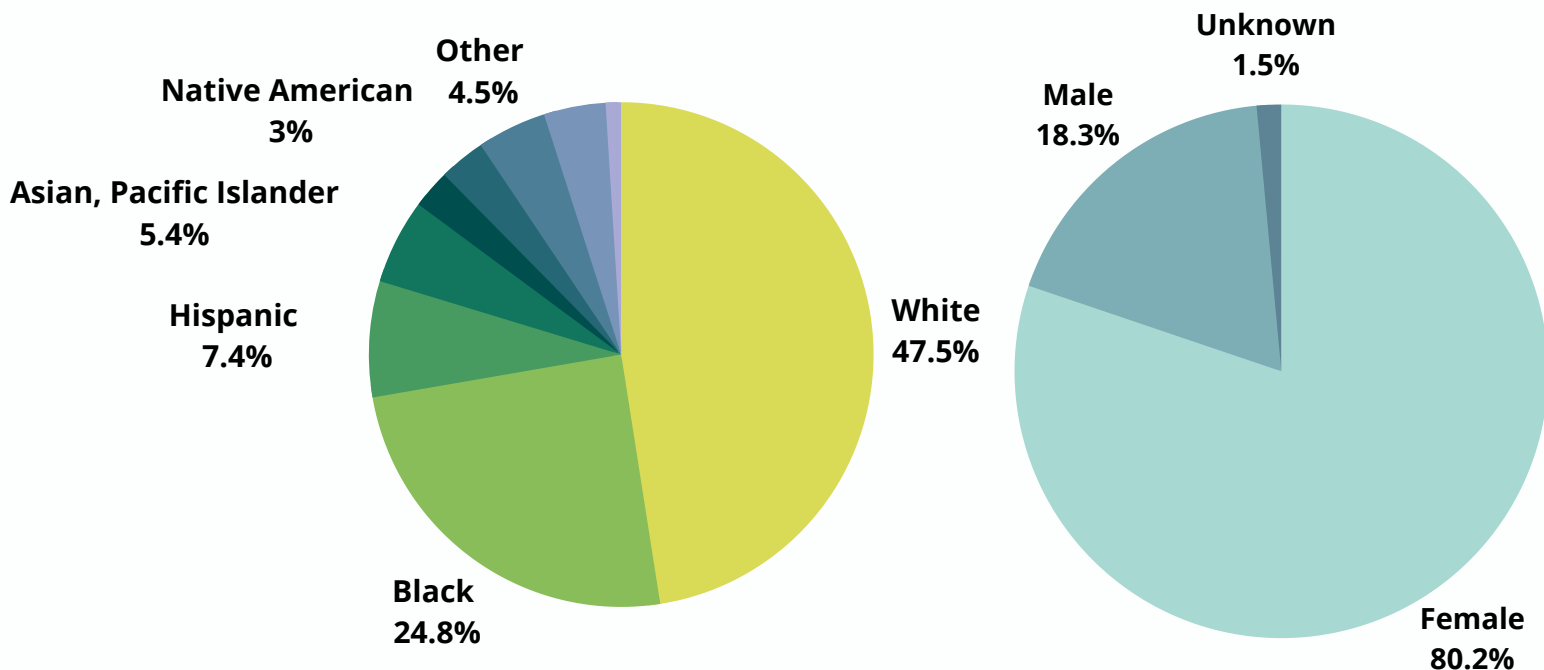
Largest number of hours by a volunteer on a single case: 90

The SMRLS volunteer attorney program (VAP) utilizes volunteers to take additional cases in areas staff attorneys practice in (housing, family) and finds volunteers to take cases that staff attorneys do not have expertise in (Probate, Guardianship, Real Estate). The program also interacts with law students, undergraduate, corporate, and paralegal volunteers. VAP holds clinics for pro se and unbundled service, administers service and filing on complicated pro se cases such as criminal expungement, and supports volunteers who work on full representation cases. There is never a boring day in VAP; we see unique cases that don't "fit" in a problem code. For instance, in 2021, we help a client obtain a pro se name change that required a felon name change notice using the same support format we use for divorce clinics. The case recently successfully closed.



In October, the SMRLS Volunteer Attorney program held their first in-person clinic since February of 2019 in partnership with Allianz Life Insurance and the MN Elder Justice Center. At the clinic they were able to draft 13 estate planning documents for clients in a small, COVID-safe clinic.

VAP Client Demographics



WHAT'S NEW WITH VAP?

Several clinics were re-established in 2021: Eviction Expungement, Criminal Expungement, and Estate Planning.

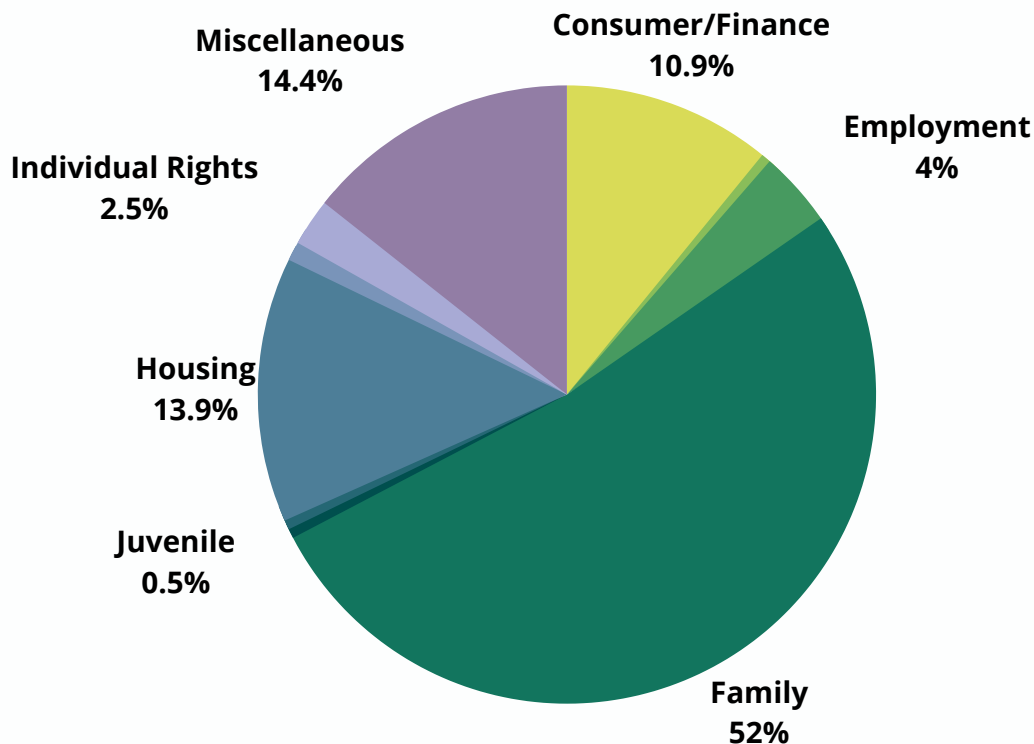
We were also able to start a new clinic in partnership with Mitchell Hamline and Interfaith Action. Beautiful Laundrette is a walk-in clinic held at a laundromat in West St. Paul.

WHAT DO VOLUNTEER ATTORNEYS HAVE TO SAY ABOUT THEIR EXPERIENCE WITH VAP?

"I want to sincerely thank [client] and SMRLS for the opportunity to work with and represent [client]. She is a delightful woman and I am proud to have represented her in her divorce proceeding through SMRLS."

"As I have mentioned before, the assistance the SMRLS provides, especially the assistance from Emily (Volunteer Coordinator), was exemplary in all respects."

Categories of VAP Cases



Interested in becoming a volunteer attorney with SMRLS?

Apply online at smrls.org/volunteer or contact one of our volunteer coordinators:

SW Minnesota/Greater Mankato:
Forrest McKnight
forrest.mcnknight@smrls.org

OR

SE Minnesota/Twin Cities Metro:
Emily Bowen
emily.bowen@smrls.org

Statement of Financial Position

December 31, 2021 and 2020

	<u>2021</u>	<u>2020</u>
Assets		
Current Assets		
Cash and cash equivalents	\$ 3,217,103	\$ 4,280,706
Certificates of deposit	2,100,000	2,100,000
Client escrow funds	14,037	1,302
Grants and contracts receivable	1,553,772	918,962
Prepaid expenses	67,151	53,534
Other receivable	-	23,269
Investments	15,328	14,515
	<u>6,967,391</u>	<u>7,392,288</u>
Property and Equipment, net		
Furniture, fixtures and equipment	308,472	308,472
Leasehold improvements	223,695	223,695
Vehicle	90,832	90,832
Law library	382,385	382,385
	<u>1,005,384</u>	<u>1,005,384</u>
Less accumulated depreciation	<u>(902,188)</u>	<u>(885,032)</u>
Net property and equipment	<u>103,196</u>	<u>120,352</u>
Total assets	<u>\$ 7,070,587</u>	<u>\$ 7,512,640</u>
Liabilities and Net Assets		
Current Liabilities		
Accounts payable	\$ 183,614	\$ 272,145
Client trust deposits	7,250	1,302
Accrued expenses	1,134,050	959,589
Deferred rent	49,977	36,829
Deferred revenue	769,608	-
	<u>2,144,499</u>	<u>1,269,865</u>
Net Assets		
Without donor restrictions	504,602	2,081,687
Without donor restrictions, board designated	<u>3,483,867</u>	<u>3,483,867</u>
Total without donor restrictions	3,988,469	5,565,554
With donor restrictions	<u>937,619</u>	<u>677,221</u>
Total net assets	<u>4,926,088</u>	<u>6,242,775</u>
Total liabilities and net assets	<u>\$ 7,070,587</u>	<u>\$ 7,512,640</u>

Statement of Activities

Year Ended December 31, 2021

	2021			2020
	Without Donor Restrictions	With Donor Restrictions	Total	Total
Support and Revenue				
Grants and contracts	\$ 6,596,590	\$ 2,712,162	\$ 9,308,752	\$ 8,763,185
Other support	533,398	448,612	982,010	1,589,993
In-kind contributions	407,492	-	407,492	646,819
Miscellaneous	5,195	-	5,195	37,448
Investment income	10,970	-	10,970	15,354
Net assets released from restrictions	2,900,376	(2,900,376)	-	-
Total support and revenue	10,454,021	260,398	10,714,419	11,052,799
Expenses				
Program services	10,238,007	-	10,238,007	10,172,606
Supporting services:				
Management and general	1,464,181	-	1,464,181	1,673,724
Fundraising	328,918	-	328,918	311,524
Total expenses	12,031,106	-	12,031,106	12,157,854
Change in net assets	(1,577,085)	260,398	(1,316,687)	(1,105,055)
Net Assets, Beginning	5,565,554	677,221	6,242,775	7,347,830
Net Assets, Ending	\$ 3,988,469	\$ 937,619	\$ 4,926,088	\$ 6,242,775

Statement of Functional Expenses

Year Ended December 31, 2021

	Program Services	Supporting Services		Total 2021	Total 2020
		Management and General	Fundraising		
Expenses					
Personnel					
Donated services	\$ 420,331	\$ -	\$ -	\$ 420,331	\$ 646,976
Lawyers	4,235,027	-	118,139	4,353,166	4,268,242
Paralegals	717,452	-	14,357	731,809	716,057
Other staff	954,424	803,989	-	1,758,413	1,647,998
Employee benefits and taxes	2,274,514	199,515	113,624	2,587,653	2,386,708
Total personnel	8,601,748	1,003,504	246,120	9,851,372	9,665,981
Non Personnel					
Contract labor	26,427	52,978	-	79,405	299,117
Rent and space	651,997	54,923	-	706,920	674,913
Travel and mileage	19,591	9,403	358	29,352	33,259
Training, dues and subscriptions	42,775	23,881	5,665	72,321	103,833
Phone, office and postage	127,541	133,743	1,870	263,154	273,297
Equipment, copier and software	160,134	29,891	4,844	194,869	178,618
Events	-	-	70,061	70,061	19,043
Litigation, interpreter and legal research	150,233	-	-	150,233	124,540
Administrative fees and expenses	73,435	138,702	-	212,137	148,970
Depreciation	-	17,156	-	17,156	3,697
Miscellaneous	13,785	-	-	13,785	180,498
Contracts	61,497	-	-	61,497	116,892
Coalition support	253,480	-	-	253,480	269,406
County and other support	55,364	-	-	55,364	65,790
Total non personnel	1,636,259	460,677	82,798	2,179,734	2,491,873
Total expenses	\$ 10,238,007	\$ 1,464,181	\$ 328,918	\$ 12,031,106	\$ 12,157,854
Percentage of total expenses	85.1%	12.2%	2.7%	100.0%	

Board Members

Brett W. Olander

President
Olander Law Group

Brenda Devlin

Vice-President
Harris Companies

Thomas B. Hatch

Treasurer
Office of the Ramsey County
Attorney

Kari Valley

Secretary
Miso Energy

Tashonda Williamson

Community Member

Andrew M. Baese

Taft Stettinius & Hollister LLP

Samantha Sutton

Securian Financial

Pam James

Community Member

Jan Marie Lundgren

Community Member

Joshua Murphy

Mayo Clinic

Terrance C.S. Newby

Maslon

Brett Strand

3M

Abdi Sabrie

Community Member

Jim Suk

Suk Law Firm

Elizabeth Webster

Community Member

CLA Committee Members

Steven J. Kirsch *Co-Chair*

Larson • King

Peter Schmit *Co-Chair*

Robins Kaplan, LLP

Stuart Alger

Malkerson Gunn Martin

Angela Brandt

Larson • King

Stacy Broman

Meagher & Geer

John Degan

Taft Stettinius & Hollister LLP

Richard Duncan

Faegre Drinker Biddle & Reath LLP

Yvonne Flaherty

Lockridge Grindal Nauen P.L.L.P.

Kevin P. Goodno

Fredrikson & Byron, PA

Timothy Hughes

Alliance Bank

Kevin M. Magnuson

Office of the Washington County
Attorney

Jim Long

Maslon LLP

Thomas G. Lovett

Ballard Spahr

Robert W. Mairs

Mairs & Power

Thomas J. Hanson

Winthrop & Weinstine

William Tilton

Tilton Dunn Gross

Michael O'Neill

Martin & Squires

Paul Peterson

Harper & Peterson

Val Schmitz

Daniel Scott

Stinson LLP

Ann Huntrods

Taft Stettinius & Hollister LLP

Katie Pfeifer

Dorsey & Whitney

Eric Rucker

3M

Christopher M. Scotti

Fox Rothschild

Seth Zawila

Robins Kaplan, LLP



2021 Funding Partners



Ballard Spahr

Blue Cross Blue Shield of
Minnesota

Dorsey & Whitney

Family Housing Fund

Federal Bar Association - MN
Chapter

Fredrikson & Byron Foundation

Greater Mankato Area United
Way

Greater Twin Cities United Way

Hardenbergh Foundation

Hugh J. Andersen Foundation

Margaret Rivers

Otto Bremer Trust

Richard M. Schulze Family
Foundation

Rochester Area Foundation

United Way Mower County

United Way Washington
County East

Campaign for Legal Aid Supporters

Gold (\$30,000+)

Ramsey County Bar Association
Otto Bremer Trust
Robins Kaplan, LLP
Winthrop & Weinstine, P.A.

Silver (\$15,000-\$29,999)

Faegre Drinker Biddle & Reath LLP
Medica Foundation
Dorsey & Whitney LLP

Bronze (\$5,000-\$14,999)

3rd District Bar Association
Fredrikson & Byron Foundation
Thomas Krause
Erica Kairis
Greater Mankato Area United Way
Janet G Stellpflug charitable Foundation
Ciresi Conlin LLP
Maslon LLP
Fox Rothschild LLP
Ballard Spahr LLP
Minnesota Lawyers Mutual Insurance Company
Fredrikson & Byron, P.A.
Mairs and Power, Inc
Southern Minnesota Initiative Foundation
Greene Espel PLLP
Stinson
Hardenbergh Foundation
Yvonne Flaherty
Mr. Jon A. Theobald Esq.

Platinum (\$2,500-\$4,999)

David Hutchinson
6th District Bar Association
Steven J. Kirsch Esq.
Terry L. Wade
Angela Garrett
Meagher & Geer, P.L.L.P.
Aon
Brownson PLLC
Lynn Hu
Ivan Fong Esq..

Diamond (\$1,000-\$2,499)

Adobe, Inc.
Benjamin Zibble
Mark and Jackie Nolan Family Fund
Olander Law Group
The Honorable Esther M. Tomljanovich
Val Schmitz
Michael Wells
Joshua Murphy
Schwebel, Goetz & Sieben, P.A.
Foley & Mansfield, P.L.L.P.
Mr. Peter Torseth
Pam Hanson
Henson & Efron, P.A.
Jerry Blackwell
Blackwell Burke, P.A.
GoldenberLaw, PLLC
Tilton Dunn Gross, P.L.L.P.
Bob Gilbertson
Ellen Koneck

Diamond (\$1,000-\$2,499)

American Endowment Foundation
Steve Bruess
Kevin Goodno
Rodger A. Hagen Esq.
Marc Manderscheid
Wesley Schwie
Janet C. Werness Esq.
Christopher M. Scotti Esq.
Susan Kline and John Eisberg Esq.
The Minneapolis Foundation
Steve Yoch
Thomas B. B. Hatch Esq.
Brandon Schwartz
Paul and Kelly Koziol
Andrew M. Baese Esq.
John Scott Kreighbaum
Katie C. Pfeifer Esq.
Kari Valley

Major Impact (\$500-\$999)

Peter A. Schmit Esq.
Margaret Erickson
Daniel Cole, Jr. Esq.
Thomas Nelson Esq.
Charles Schwartz
Noel Haugh
17th Judicial District Bar Association
Carolyn and Mark Wolski
Minnesota State Bar Association Public Law Section
Richard B. Allyn Esq.
William Tilton
Cousineau, Van Bergen, McNee & Malone, P.A.
Duh Kay Sheh
Sieben Polk P.A.
Ellen G. Sampson Esq.
9th District Bar Association
Charles James Suk
Samuel Hanson
Steve A. Brand Esq.
William Fisher Esq.
Charlton Dietz
The Honorable Donovan W. Frank
Dan O'Connell
Tuft, Lach, Jerabek & O'Connell, PLLC
Advocates for Justice

Major Impact (\$500-\$999)

Dr. Kathryn Freeman
Kyle Thomas
Eric Rucker
Thomas Boyd
Talia Childs
Richard A. Duncan Esq.
Mark Hallberg
Chris Siebenaler
Marjorie Dahlager
Eric S. Janus Esq.
Michael Black Esq.
Jeff Eckland
Erik Lindseth
Rogosheske, Rogosheske & Atkins PLLC

Community Builder (\$200-\$499)

Commonwealth Charitable Fund
BJ Daquila
Mary E. Miller Esq.
William L. Hoversten Esq.
Lilian N. Ejebe Esq.
Lezlie Paulus
Phengta Phetsarath
Meghan Scully
United Health Group
Professor Ann Juergens
Anne Becker
Terrance Newby Esq.
Medtronic
Peter Shimabukuro
Brenda Natala
Emily Polack
James J. Long Esq.
Joseph and Eugenia Dixon
Fred Kueppers
Kevin Goodno Esq.
Valerie Snyder Esq.
Gary Wilson
Robert Brownson
Stephen L. Nelson Esq.
Denise Scharlemann
Matthew Lasley
The Honorable Paul H. Anderson
Patricia O'Gorman
Goetz Amy

Community Builder (\$200-\$499)

Jane Doby
Casey Matthiesen
Laura Hanson
Marcia Seebart
Holly Horrell
Phil Schenkenberg Esq.
Professor Richard S. Frase
Carrie Hefte
Reding & Pilney, PLLP
Susan M. Holden Esq.
W Joseph Bruckner
Mr. John M. Degnan Esq.
Kevin and Michelle Zhao

Grassroots Supporters (\$1-\$199)

Cindy Nestrud
James L. Baillie Esq.
Karen MacLaughlin
Lindsey Anderson
Kathy Eveslage
Steven J. Wolfe
Morgan Carlson
Kristine Kaplan
3M
Virginia Agresti
Jamey Margolf
Naomi Hatfield
Kimberly Torseth
Stephanie Glasspoole
Kimberly Meister
Daniel O'Connor
Karen Frees
Eric Larson Esq.
Jan Marie Lundgren
Barry Kantrowitz
Amazon Smile Foundation
Anthony Russo
Laura Zajac
Ethan Landy
Stacie Christensen
Margaret and Logan Jacot
Kari L. Valley Esq.
Andrew Gross
Steven Balogh
Rosann and Daniel Kahner

Grassroots Supporters (\$1-\$199)

Marie Lynch
Carol Lynne
Phyllis Shoop
Judy O'Neill
Lucie O'Neill
Theil Accounting and Financial Services
Thrivent
Paul Farseth
John Schmittziel
Christopher Braden
Jessica Hafemeyer
Douglas Kilgore
Robert C. Lyman Esq.
Timothy J. Hughes
Michael D. O'Neill Esq.
Erica Nutzman
Thomas Atmore
The Honorable Thomas J. Kalitowski
Chris Brown
Ana Pottratz Acosta
Brad Crnobrna
Greg Egan
Edward Hillbrich
Jeanne Schleh
Dave Zastrow
Bruce A. Beneke
Cheryl and Alan D. Maroles Esq.
Jessica Palmer-Denig
Tim Sitzman
Michael Hagedorn Esq.
Lauree Stolarczyk
The Honorable Gail Chang Bohr
Timothy Goodman and Susanne Star-Goodman
Joel Holstad
David Astramecki
Jocelyn F. Olson Esq.
Jill Smith
Paul Ablan
Alex Borchert
Emily Bowen
Lara Otsuka
Pounnaphone Phomtalikhith
Henry Pitera
Michael Gregory Simpson
Seth Zawila
Bruce Finzen

Grassroots Supporters (\$1-\$199)

Jennifer Pusch
Robert Mairs
Barbara Penn
Kelly G. Laudon
Deborah Liang
Samuel Steiner
William Studer
Kerri Nelson
Erik Ordahl
Alice Silkey
Angela Behrens Esq.

Get in touch with us

Administrative Office:
800 Alliance Bank Center
55 East 5th Street
St. Paul, MN 55101
(651) 228-9823
(651) 228-9450 FAX
cla@smrls.org

Client Intake:
1-888-575-2954
Hotline Hours: Friday
9:00 a.m. - 11:45 a.m.
and 1:00 p.m. - 3:00
p.m. CST
Apply online at
www.smrls.org

Follow us on
social media:
@smrlsmn



SMRLS OFFICES

Administrative Office

800 Alliance Bank Center
55 East 5th Street
St. Paul, MN 55101

Immigration and Education Services - Rochester

903 West Center Street, Suite 230
Rochester, MN 55902

Agricultural Worker Project - St. Paul

400 Alliance Bank Center
55 East 5th Street
St. Paul, MN 55101

Rochester Office

903 West Center Street, Suite 230
Rochester, MN 55902

Agricultural Worker Project - Moorhead

1015 7th Avenue North
Moorhead, MN 56560

St. Paul Central Office

400 Alliance Bank Center
55 East 5th Street
St. Paul, MN 55101

Albert Lea Office

146 College St. W
Albert Lea, MN 56007

Shakopee Office

Transitioning to new location!

Education Law Project

450 North Syndicate Street, Suite 250
St. Paul, MN 55104

Winona Office

66 East 3rd Street, Suite 204
Winona, MN 55987

Mankato Office

12 Civic Center Plaza, Suite 3000
Mankato, MN 56001

Worthington Office

1567 North McMillan Street, Suite 6
Worthington, MN 56187

Immigration and Education Services - St. Paul

450 North Syndicate Street, Suite 285
St. Paul, MN 55104

Justice Matters®